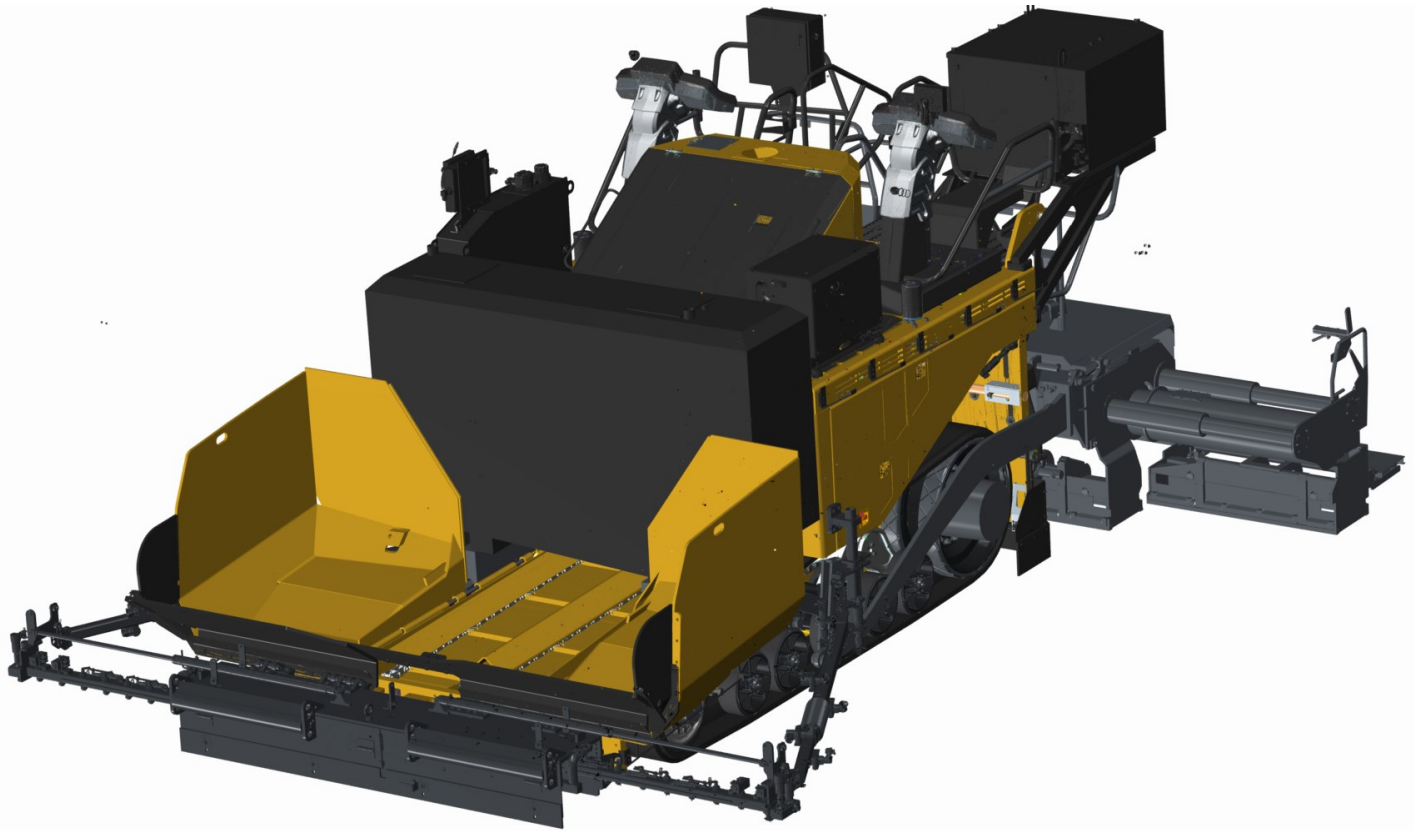


Spray Paver



*MAY BE SHOWN WITH OPTIONAL EQUIPMENT

SP500C / SP500V

With an Integral dx Spray Paver attachment on your paver, you can spray tack or seal coat emulsion and apply hot mix asphalt, with one pass and one machine.



www.SprayPaver.com

Designed with simple, proven technology, the Integral dx Spray Paver is made up of three key groups, • Pump • Emulsion Tank • Emulsion Spray and four regulatory systems,

- Hydraulic
- Pneumatic
- Heating
- Control

All working in harmony for easy, precise and reliable operation, providing you with ultimate flexibility. New, used, tracked or wheeled, our system can be installed on any application.

You have the ability to reconfigure according to the job, easily convert between spray paver or conventional paving. Option ready packages are available in standard models, giving you the opportunity to upgrade your system as needed.

The Groups

Pump Group

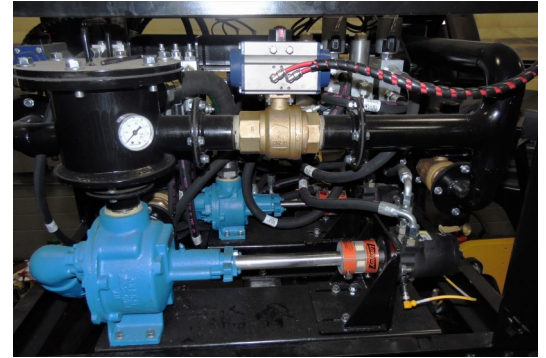
Two emulsion pumps are used for efficient operation and precise control. They can handle any project from light application tack coat to full seal coating.

Emulsion Tank Group

The emulsion tank has a 500 gallon capacity. Various tank configurations are available to meet your needs.

Features include:

- 2 inch Rockwool Insulation to maintain optimal temperature
- Fill and drain ports for direct loading and emptying



Emulsion Spray Group

Adaptable to the job, spray bars are configured to spray emulsion without the paver driving over the applied emulsion. Features include:

- Front spray bars are adjustable, 8 to 16 ft
- Spray bar extension and nozzle valve control from the pendant on the screed
- Entire spray bar tilts for easy trailer loading

The Systems

Hydraulic System

The Integral dx Spray Paver hydraulic system is 100% independent of the paver hydraulics. It provides a safe, responsive and accurate method to power the emulsion pumps and the spray bar positioning cylinders.

Reservoir:

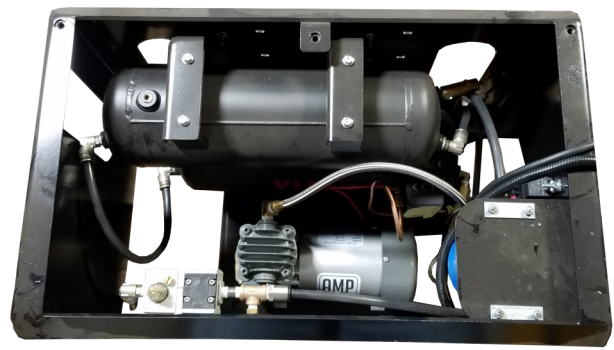
- 23 gallon capacity
- Mounted independently on the paver deck
- Integral cooler to keep safe operating temperature
- PTO power source: Axial piston (off paver engine)

Pneumatic System

The air compressor is located on the paver or screed deck. It provides compressed air to the solenoid valves,

the pneumatic valves that control the spray paver functions:

- Tank load
- Spray
- Clean out
- Circulate
- Vacuum back



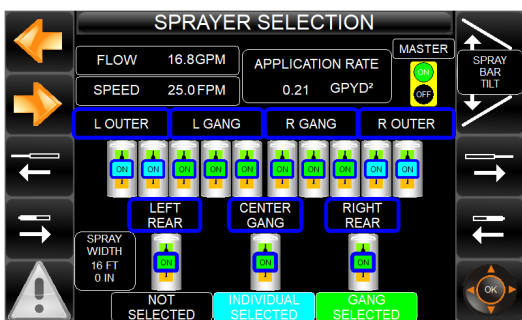
Heating System

The emulsion tank heating system keeps emulsion at high temperatures to prevent system clogging

- Powered by 120 V or 240 V on-board power or shore power for overnight heating
- Heating elements: 8 kW at 240 V or 2 kW at 120 V
- Adjustable over-temperature switch ensures safe operation

Control System

The fully-automated spray paver control system operates pump functions and maintains the emulsion application rate as set by the operator, regardless of paving speed.



Display screen unit:

- Located near the operator control console for easy use
- Real time operation
- Front safety cameras can be connected to the display screen
- Pendant control allows a second operator to turn spray on/off and control spray width



Product Specifications



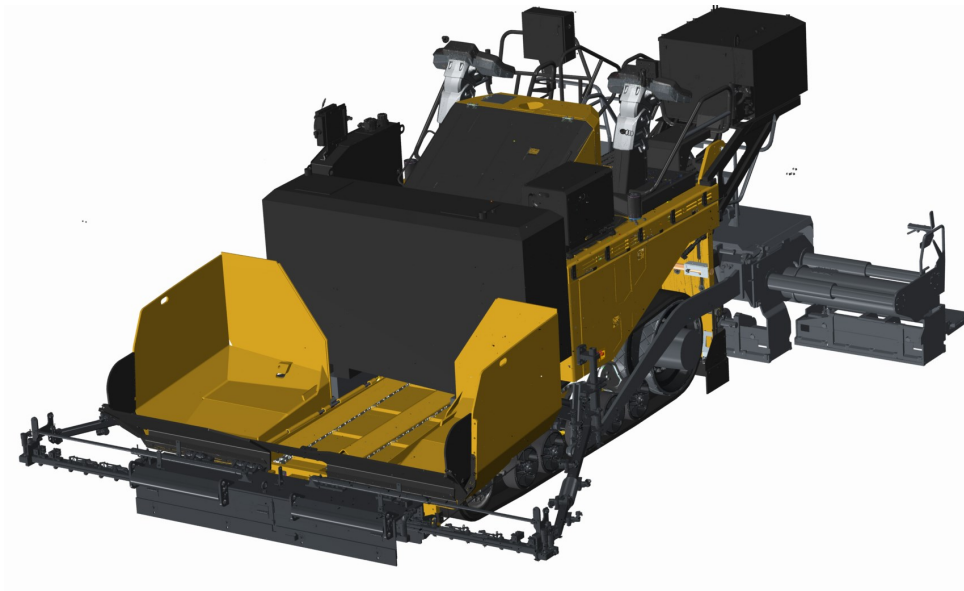
Capacities	500 Gallon Tank
Hydraulic Tank Size	23 gal
Hopper Capacity	11 tons
Emulsion Tank	500 gal
Optional Cleanout Tank	<i>*not available*</i>

Specifications	
Control Voltage	24v
Heating System	120v—240v
Total number of spray nozzles	31
Weight of Spray System	7000 lbs
Maximum Spray Width	16 ft
Maximum Gallons per Minute	70 GPM
Operating Speed Range	12-120 FPM





Spray Paver



*MAY BE SHOWN WITH OPTIONAL EQUIPMENT

500 & 1600 gallon tank options

Configured to fit most 8' & 10' pavers

Eliminates the need for an asphalt distributor & material transfer vehicle

Whether you pave city streets or long freeways, this machine has what you need to do the job.

